

KENTUCKY MOTORCYCLE OPERATORS MANUAL





ANDY BESHEAR
Governor of the
Commonwealth of Kentucky



KENTUCKY JUSTICE &
PUBLIC SAFETY CABINET

Dear Kentucky Motorcyclist:

Each day we work to make our highways in Kentucky safer for all to travel. Riding a motorcycle on the open roads can be a wonderful way to experience the unique beauty of the Commonwealth. Along with this privilege, however, comes responsibility.

This manual focuses on motorcycle safety and Kentucky laws in regard to operating motorcycles in our state. Please take the time to study this information carefully. These laws have been put in place for the well being of all people traveling our roadways. Practicing safety is the key to prevention of accidents. I hope you will join in this effort and use safe practices in order to keep yourself and others from harm's way.

Thank you for sharing our commitment to safer highways for all Kentuckians. Enjoy your ride as you travel the Commonwealth and see all our state has to offer.



PHILLIP BURNETT, JR.
Commissioner
Kentucky State Police

Dear Kentucky Motorcyclist,

The Kentucky Motorcycle Operators Manual has been partially provided by The Motorcycle Safety Foundation and prepared by the Kentucky State Police to better serve those wanting to obtain a Motorcycle License. This manual provides you with information on the requirements of the operator, the passenger and the vehicle. By studying the manual you will understand the Motorcycle Laws and requirements of Kentucky and learn safety tips, which will help keep you and those you share the highway with safe.

As a reminder, you are required to obey not only motorcycle laws, but all traffic laws and regulations that apply to motorists on our highways. It is my sincere hope that you have an enjoyable and safe riding experience as a new motorcycle operator and commit to making our highways safe by following the laws of Kentucky.

Best wishes and enjoy your new driving privileges.



919 VERSAILLES ROAD
FRANKFORT, KY 40601
www.kentuckystatepolice.org



TABLE OF CONTENTS

MOTORCYCLES LAWS & REQUIREMENTS	1
Kentucky Motorcycle Law.....	1
Obtaining A Motorcycle Licenses.....	1
Operator/Passenger Requirements.....	1
Vehicle Requirements.....	2
Motorcycle Safety Education Program.....	2
MOTORCYCLE SAFETY TIPS	3
Preparing to Ride.....	3
Wearing the Right Gear.....	3
Know your Motorcycle.....	4
The Right Motorcycle for You.....	5
Know Your Responsibilities.....	6
Ride Within Your Abilities.....	7
Basic Vehicle Control.....	7
Keeping Your Distance.....	8
SEE.....	12
Intersections.....	13
Increasing Conspicuity.....	14
Crash Avoidance.....	17
Handling Dangerous Surfaces.....	20
Mechanical Problems.....	22
Animals.....	24
Flying Objects.....	24
Getting Off The Road.....	24
Carrying Passengers and Cargo.....	24
Group Riding.....	26
BEING IN SHAPE TO RIDE	28
Why This Information is Important.....	28
Alcohol & Other Drugs in Motorcycle Operation.....	28
Alcohol In The Body.....	28
Alcohol & the Law.....	30
Minimize the Risk.....	30
Step in to Protect Friends.....	31
Fatigue.....	31
Summary.....	31
PERFORMANCE TEST	32
MOPEDS	33
Operation.....	33
TRAIL BIKES & ALL-TERRAIN VEHICLES (ATV'S)	33
SIGNALS/SIGNS	33

MOTORCYCLES LAWS & REQUIREMENTS

A large portion of this manual contains safety information printed directly from the Motorcycle Safety Foundation's manual. It is the opinion of the Motorcycle Safety Foundation (MSF) and not necessary that of all who operate a motorcycle. They have compiled their information through publications, interviews and observations of those familiar with motorcycles.

All traffic laws and regulations apply equally to passenger car and motorcycle operators. To qualify for a motorcycle operator's license, you must learn the information contained throughout this manual. Many motorcycle dealers have free literature on riding tips, which may also be helpful to you. In this manual, emphasis will be on motorcycle:

- LAWS
- OPERATOR REQUIREMENTS
- VEHICLE REQUIREMENTS
- SAFETY TIPS

KENTUCKY MOTORCYCLE LAW

DEFINITION: Kentucky law defines a motorcycle as any motor-driven vehicle having a seat or saddle for the use by the operator and designed to travel on not more than three wheels in contact with the ground, but excluding tractors and vehicles on which the operator and passengers ride in an enclosed cab, and excluding a moped.

Motor bikes, mini bikes, and any other small vehicles may not be operated upon the street or highway without first meeting the requirements for a motor vehicle, such as registration plate; and the operator must have a license to operate the vehicle. The only place a driver may legally ride or operate this type of vehicle without an operator's license and other safety equipment is on private property. It is important to know the Kentucky Traffic Laws (KRS 186 and KRS 189).

This can be found at <http://www.lrc.ky.gov>

OBTAINING A MOTORCYCLE LICENSE

A person must possess a valid motor vehicle operator's license or a person must be at least 18 years of age to apply for a motorcycle instruction permit to operator a motorcycle. A person under the age of 18 must have a parent or legal guardian sign for the permit. If the person does not have a living parent nor a legal guardian, the instruction permit must be signed by someone willing to assume responsibility for the applicant. This is true even if the parent or legal guardian has already signed the Driver License Application allowing the minor to drive a moped or automobile. A person applying for a permit must make application at any Kentucky Transportation Cabinet Regional Office. Additional information can be found on the Kentucky Transportation Cabinet website <https://drive.ky.gov/Drivers/Pages/Motorcycles-Mopeds.aspx>.

OPERATOR/PASSENGER REQUIREMENTS

OPERATOR MUST HAVE: A valid motor vehicle operator's license with a valid motorcycle operator's endorsement thereon, a motorcycle license, or an instruction permit to operate a motorcycle, before operating a motorcycle upon any public roadway in Kentucky.

A motorcycle operator authorized to operate a motorcycle on an instruction permit shall not be authorized to carry passengers.

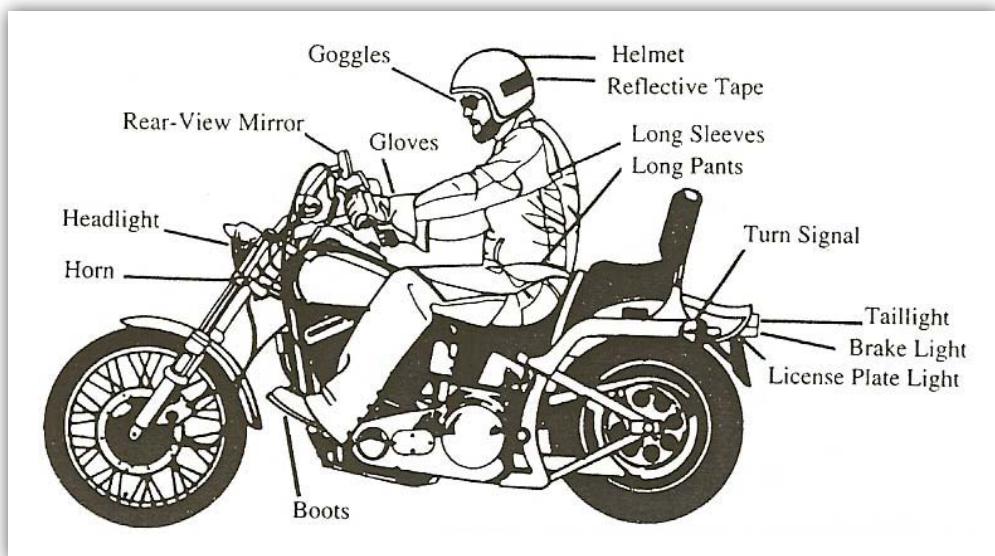
The operator must use an approved eye-protection device, in the manner prescribed by the Transportation Cabinet, and both the operator and passenger must wear approved protective headgear anytime the vehicle is in motion.

A person may operate without a helmet if he or she is over 21 and has held a motorcycle license for one year or more. Passengers must be 21 or over to ride without a helmet. Persons under 21, or those who have held their licenses for less than one year, must wear protective headgear.

VEHICLE REQUIREMENTS

It is unlawful to operate or ride as a passenger on a motorcycle which does not have a seat or footrest permanently attached, both being specifically designed to carry passengers in a safe manner.

EQUIPMENT REQUIRED: Rearview mirror, one headlight high and low beam, taillight, horn, muffler, tailpipe, brake light, front and rear brakes, proof of liability insurance, good tires, and registration. Turn signals are now required, if they were part of the factory equipment for that model.



MOTORCYCLE SAFETY EDUCATION PROGRAM

This program shall offer motorcycle rider training courses designed to develop and instill knowledge, attitudes, habits, and skills necessary for the proper operation of a motorcycle.

Rider training courses shall be open to any resident of the state who either holds a current valid driver's license for any classification or holds a motorcycle instruction permit.

Applicants for a motorcycle driver's license will be exempted from the licensing skills test if they present satisfactory evidence of successful completion of an approved rider training course that includes a similar test of skill.

For more information regarding motorcycle rider training school locations and costs, please contact the Kentucky Motorcycle Safety Program at **1-800-396-3234**.

MOTORCYCLE SAFETY TIPS

PREPARING TO RIDE – What you do before you start a trip goes a long way toward determining whether or not you'll get where you want to go safely. Before taking off on any trip, a safe rider makes a point to:

- WEAR THE RIGHT GEAR
- CHECK THE MOTORCYCLE EQUIPMENT
- BECOME FAMILIAR WITH THE MOTORCYCLE
- BE A RESPONSIBLE RIDER

WEAR THE RIGHT GEAR

When you ride, your gear is "right" if it protects you. In any crash, you have a far better chance of avoiding serious injury if you wear:

- AN APPROVED HELMET
- FACE OR EYE PROTECTION
- PROTECTIVE CLOTHING

HELMET USE

Crashes can occur – particularly among untrained, beginning riders. One out of every five motorcycle crashes results in head or neck injuries. Head injuries are just as severe as neck injuries – and far more common. Crash analyses show that head and neck injuries account for a majority of serious and fatal injuries to motorcyclists. Research also shows that, with few exceptions, head and neck injuries are reduced by properly wearing an approved helmet.

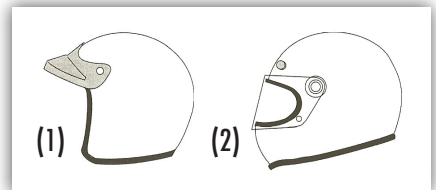
Some riders don't wear helmets because they think helmets will limit their view to the sides. Others wear helmets only on long trips or when riding at high speeds. Here are some facts to consider:

- An approved helmet lets you see as far to the sides as necessary. A study of more than 900 motorcycle crashes, where 40% of the riders wore helmets, did not find even one case in which a helmet kept a rider from spotting danger.
- Most crashes happen on short trips (less than five miles long), just a few minutes after starting out.
- Most riders are riding slower than 30 mph when a crash occurs. At these speeds, helmets can cut both the number and the severity of head injuries by half. No matter what the speed, helmeted riders are three times more likely to survive head injuries than those not wearing helmets at the time of the crash.

HELMET SELECTION

There are two primary types of helmets, providing two different levels of coverage: (1) Three-quarter, (2) Full Face.

Whichever style you choose, you can get the most protection by making sure that the helmet:



- Is designed to meet U.S. Department of Transportation (DOT) and state standards. Helmets with a label from the Snell Memorial Foundation give you an added assurance of quality.
- Fits snugly, all the way around.
- Has no obvious defects such as cracks, loose padding or frayed straps. Whatever helmet you decide on, keep it securely fastened on your head when you ride. Otherwise, if you are involved in a crash, it's likely to fly off your head before it gets a chance to protect you.

EYE & FACE PROTECTION

A plastic shatter-resistant face shield can help protect your whole face in a crash. It also protects you from wind, dust, dirt, rain, insects and pebbles thrown up from cars ahead. These problems are distracting and can be painful. If you have to deal with them, you can't devote your full attention to the road.

Goggles protect your eyes, though they won't protect the rest of your face like a face shield does. A windshield is not a substitute for a face shield or goggles. Most windshields will not protect your eyes from the wind. Neither will eyeglasses or sunglasses. Glasses won't keep your eyes from watering, and they might blow off when you turn your head while riding. To be effective, eye or face shield protection must:

- Be free of scratches.
- Fasten securely, so it does not blow off.
- Be resistant to penetration.
- Give a clear view to either side.
- Permit air to pass through, to reduce fogging.
- Permit enough room for eyeglasses or sunglasses, if needed (tinted eye protection should not be worn at night or any other time when little light is available).

CLOTHING

The right clothing protects you in a collision. It also provides comfort, as well as protection from heat, cold, debris and hot and moving parts of the motorcycle. It can also make you more visible to others.

Jacket and pants should cover arms and legs completely. They should fit snugly enough to keep from flapping in the wind, yet loosely enough to move freely. Leather offers the most protection. Sturdy synthetic material provides a lot of protection as well. Wear a jacket even in warm weather to prevent dehydration. Many are designed to protect without getting you overheated, even on summer days.

Boots or shoes should be high and sturdy enough to cover your ankles and give them support. Soles should be made of hard, durable, slip-resistant material. Keep heels short so they do not catch on rough surfaces. Tuck in laces so they won't catch on your motorcycle.

Gloves allow a better grip and help protect your hands in a crash. Your gloves should be made of leather or similar durable material.

In cold or wet weather, your clothes should keep you warm and dry, as well as protect you from injury. You cannot control a motorcycle well if you are numb. Riding for long periods in cold weather can cause severe chill and fatigue. A winter jacket should resist wind and fit snugly at the neck, wrists and waist. Good quality rain suits designed for motorcycle riding resist tearing apart or ballooning up at high speeds.

KNOW YOUR MOTORCYCLE

There are plenty of things on the highway that can cause you trouble. Your motorcycle should not be one of them. To make sure that your motorcycle won't let you down:

- Read the owner's manual first.
- Start with the right motorcycle for you.
- Be familiar with the motorcycle controls.
- Check the motorcycle before every ride.
- Avoid add-ons and modifications that make your motorcycle harder to handle.
- Keep it in safe riding condition between rides.

THE RIGHT MOTORCYCLE FOR YOU

First, make sure your motorcycle is right for you. It should “fit” you. Your feet should reach the ground while you are seated on the motorcycle, and the controls should be easy to operate. Smaller motorcycles are usually easier for beginners to operate.

At minimum, your street-legal motorcycle should have: Headlight, taillight and brake light, front and rear brakes, turn signals, horn and two mirrors.

BORROWING & LENDING

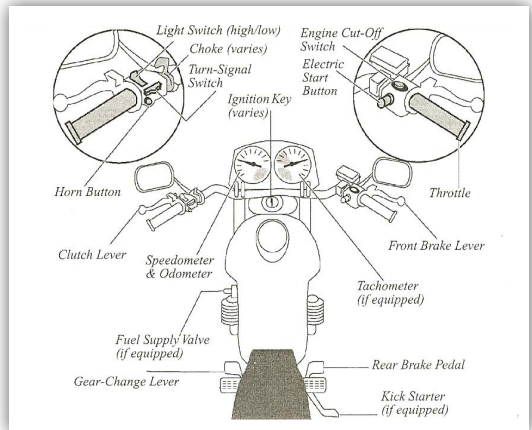
Borrowers and lenders of motorcycles, beware. Crashes are fairly common among beginning riders — especially in the first months of riding. Riding an unfamiliar motorcycle adds to the problem. If you borrow a motorcycle, get familiar with it in a controlled area. And if you lend your motorcycle to friends, make sure they are licensed and know how to ride before allowing them out into traffic.

No matter how experienced you may be, ride extra carefully on any motorcycle that’s new or unfamiliar to you. It takes time to adjust, so give yourself a greater margin for errors.

GET FAMILIAR WITH THE MOTORCYCLE CONTROLS

Make sure you are completely familiar with the motorcycle before you take it out on the street. Be sure to review the owner’s manual. This is particularly important if you are riding a borrowed motorcycle. If you are going to use an unfamiliar motorcycle:

- Make all the checks you would on your own motorcycle.
- Find out where everything is, particularly the turn signals, horn, headlight switch, fuel-supply valve and engine cut-off switch.
- Find and operate these items without having to look for them.
- Know the gear pattern. Work the throttle, clutch and brakes a few times before you start riding. All controls react a little differently.
- Ride very cautiously and be aware of surroundings. Accelerate gently, take turns more slowly and leave extra room for stopping.



CHECK YOUR MOTORCYCLE

A motorcycle needs more frequent attention than a car. A minor technical failure in a car seldom leads to anything more than an inconvenience for the driver. If something’s wrong with the motorcycle, you’ll want to find out about it before you get in traffic. Make a complete check of your motorcycle before every ride.

Before mounting the motorcycle, make the following checks:

- **TIRES** – Check the air pressure, general wear and tread.
- **FLUIDS** – Oil and fluid levels. At a minimum, check hydraulic fluids and coolants weekly. Look under the motorcycle for signs of an oil or gas leak.
- **HEADLIGHTS & TAILLIGHTS** – Check them both. Test your switch to make sure both high and low beams are working.
- **TURN SIGNALS** – Turn on both right and left turn signals. Make sure all lights are working properly.
- **BRAKE LIGHT** – Try both brake controls, and make sure each one turns on the brake light.

Once you have mounted the motorcycle, complete the following checks before starting out:

- **CLUTCH AND THROTTLE** – Make sure they work smoothly. The throttle should snap back when you let go. The clutch should feel tight and smooth.
- **MIRRORS** – Clean and adjust both mirrors before starting. It's difficult to ride with one hand while you try to adjust a mirror. Adjust each mirror so you can see the lane behind and as much as possible of the lane next to you. When properly adjusted, a mirror may show the edge of your arm or shoulder—but it's the road behind and to the side that's most important.
- **BRAKES** – Try the front and rear brake levers one at a time. Make sure each one feels firm and holds the motorcycle when the brake is fully applied.
- **HORN** – Try the horn. Make sure it works.

In addition to the checks you should make before every trip, check the following items at least once a week: Wheels, cables, fasteners and fluid levels. Follow your owner's manual to get recommendations.

KNOW YOUR RESPONSIBILITIES

"Accident" implies an unforeseen event that occurs without anyone's fault or negligence. Most often in traffic, that is not the case. In fact, most people involved in a crash can usually claim some responsibility for what takes place.

Consider a situation where someone decides to try to squeeze through an intersection on a yellow light turning red. Your light turns green. You pull into the intersection without checking for possible latecomers. That is all it takes for the two of you to tangle. It was the driver's responsibility to stop. And it was your responsibility to look before pulling out. Neither of you held up your end of the deal. Just because someone else is the first to start the chain of events leading to a crash, it doesn't leave any of us free of responsibility.

As a rider you can't be sure that other operators will see you or yield the right of way. To lessen your chances of a crash occurring:

- **BE VISIBLE** – wear proper clothing, use your headlight, ride in the best lane position to see and be seen.
- **COMMUNICATE YOUR INTENTIONS** – use the proper signals, brake light and lane position.
- **MAINTAIN AN ADEQUATE SPACE CUSHION** – following, being followed, lane sharing, passing and being passed.

- **SEARCH YOUR PATH** – Look ahead 12 seconds ahead of your path of travel in order to identify and separate multiple hazards.
- **BE PREPARED TO ACT** – remain alert and know how to carry out proper crash-avoidance skills.

Blame doesn't matter when someone is injured in a crash. There is rarely a single cause of any crash. The ability to ride aware, make critical decisions and carry them out separates responsible riders from all the rest. Remember, it is up to you to keep from being the cause of, or an unprepared participant in, any crash.

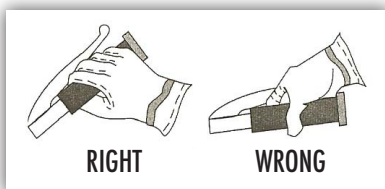
RIDE WITHIN YOUR ABILITIES

This manual cannot teach you how to control direction, speed or balance. That's something you can learn only through practice, preferably in a formal course of instruction like an MSF RiderCourse. But control begins with knowing your abilities and riding within them, along with knowing and obeying the rules of the road.

BASIC VEHICLE CONTROL

BODY POSITION – To control a motorcycle well:

- **POSTURE** – Sit so you can use your arms to steer the motorcycle rather than to hold yourself up.
- **SEAT** – Sit far enough forward so that arms are slightly bent when you hold the handgrips. Bending your arms permits you to press on the handlebars without having to stretch.
- **HANDS** – Hold the hand grips firmly to keep your grip over rough surfaces. Start with your right wrist flat. This will help you keep from accidentally using too much throttle. Also, adjust the handlebars so your hands are even with or below your elbows. This permits you to use the proper muscles for precision steering.
- **KNEES** – Keep your knees against the gas tank to help you keep your balance as the motorcycle turns.
- **FEET** – Keep your feet firmly on the footrests to maintain balance. Don't drag your feet. If your foot catches on something, you could be injured and it could affect your control of the motorcycle. Keep your feet near the controls so you can get to them fast if needed. Also, don't let your toes point downward – they may get caught between the road and the footrests.



SHIFTING GEARS

There is more to shifting gears than simply getting the motorcycle to pick up speed smoothly. Learning to use the gears when downshifting, turning or starting on hills is important for safe motorcycle operation. Shift down through the gears with the clutch as you slow or stop. Remain in first gear while you are stopped so that you can move out quickly if you need to. Make certain you are riding slowly enough when you shift into a lower gear. If not, the motorcycle will lurch, and the rear wheel may skid.

When riding downhill or shifting into first gear you may need to use the brakes to slow enough before downshifting safely. Work toward a smooth, even clutch release, especially when downshifting. It is best to change gears before entering a turn. However, sometimes shifting while in the turn is necessary. If so, remember to do so smoothly. A sudden change in power to the rear wheel can cause a skid.

BRAKING

Your motorcycle has two brakes: one each for the front and rear wheel. Use both of them at the same time. The front brake is more powerful and can provide at least three-quarters of your total stopping power. The front brake is safe to use if you use it properly. Remember:

- Use both brakes every time you slow or stop. Using both brakes for even “normal” stops will permit you to develop the proper habit or skill of using both brakes properly in an emergency. Squeeze the front brake and press down on the rear. Grabbing at the front brake or jamming down on the rear can cause the brakes to lock, resulting in control problems.
- If you know the technique, using both brakes in a turn is possible, although it should be done very carefully. When leaning the motorcycle some of the traction is used for cornering. Less traction is available for stopping. A skid can occur if you apply too much brake. Also, using the front brake incorrectly on a slippery surface may be hazardous. Use caution and squeeze the brake lever, never grab.
- Some motorcycles have integrated braking systems that activate the front and rear brakes together when applying the rear brake pedal. (Consult the owner’s manual for a detailed explanation on the operation and effective use of these systems.)

TURNING

Riders often try to take curves or turns too fast. When they can’t hold the turn, they end up crossing into another lane of traffic or going off the road. Or, they overreact and brake too hard, causing a skid and loss of control.

Approach turns and curves with caution. Use four steps for better control:

- **SLOW** – Reduce speed before the turn by closing the throttle and, if necessary, applying both brakes.
- **LOOK** – Look through the turn to where you want to go. Turn just your head, not your shoulders, and keep your eyes level with the horizon.
- **PRESS** – To turn, the motorcycle must lean. To lean the motorcycle, press on the hand grip in the direction of the turn. Press left hand grip – lean left – go left. Press right hand grip – lean right – go right. The higher the speed in a turn, the greater the lean angle.
- **ROLL** – Roll on the throttle to maintain or slightly increase speed. This helps stabilize the motorcycle. In normal turns, the rider and the motorcycle should lean together at the same angle.

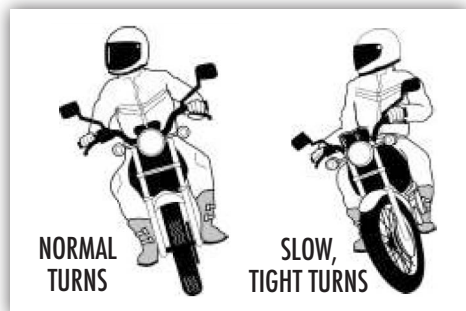
In slow, tight turns, counterbalance by leaning the motorcycle only and keeping your body straight.

KEEPING YOUR DISTANCE

The best protection you can have is distance – a “cushion of space” – all around your motorcycle.

If someone else makes a mistake, distance permits you:

- TIME TO REACT
- SPACE TO MANEUVER

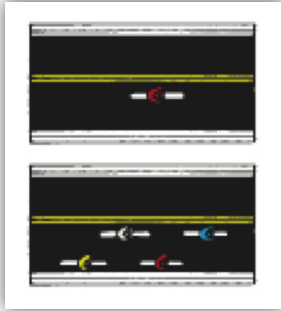


LANE POSITIONS

In some ways the size of the motorcycle can work to your advantage. Each traffic lane gives a motorcycle three paths of travel. Your lane position should:

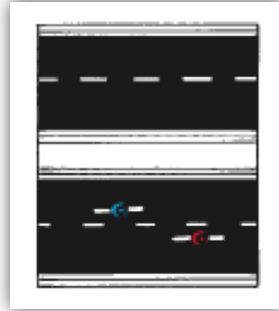
- Increase your ability to see and be seen.
- Protect your lane from other drivers.
- Avoid others' blind spots.
- Provide an escape route.
- Avoid surface hazards.
- Communicate your intentions.
- Avoid wind blast from other vehicles.

Select the appropriate path to maximize your space cushion and make yourself more easily seen by others on the road. The best lane position for seeing and being seen is the left third of the lane.



On a two-lane roadway, ride on the left portion of your lane.

When riding in a group, you should ride in a staggered position, and never side by side.



On a four-lane roadway, when alone, ride on the left half of the right lane, or on the right half of the inside lane.

RIGHT-OF-WAY

Even though the right-of-way is yours, it may be necessary to yield. The cyclist nearly always loses in a collision with a larger vehicle. Remember, others may not see you.

FOLLOWING ANOTHER VEHICLE

“FOLLOWING TOO CLOSELY” could be a factor in crashes involving motorcyclists. In traffic, motorcycles need as much distance to stop as cars. Normally, a minimum of four seconds distance should be maintained behind the vehicle ahead. To gauge your following distance:

- Pick out a marker, such as a pavement marking or lamppost, on or near the road ahead.
- When the rear bumper of the vehicle ahead passes the marker, count off the seconds: “one-thousand-one, one-thousand-two, one-thousand-three, one-thousand-four.”
- If you reach the marker before you reach “four,” you are following too closely.

A four-second following distance leaves a minimum amount of space to stop or swerve if the driver ahead stops suddenly. It also permits a better view of potholes and other hazards in the road. A larger cushion of space is needed if your motorcycle will take longer than normal to stop. If the pavement is slippery, if you cannot see through the vehicle ahead, or if traffic is heavy and someone may squeeze in front of you, open up a longer following distance.

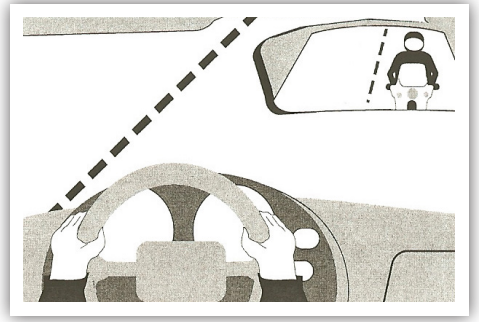
Keep well behind the vehicle ahead even when you are stopped. This will make it easier to get out of the way if someone bears down on you from behind. It will also give you a cushion of space if the vehicle ahead starts to back up for some reason.

When following a vehicle, ride near the left third of the lane. Never follow too closely, as this reduces the ability to stop safely and to see road and traffic conditions including hazards ahead.

BEING FOLLOWED

Speeding up to lose someone following too closely only ends up with someone tailgating you at a higher speed.

A better way to handle tailgaters is to get them in front of you. When someone is following too closely, change lanes and let them pass. If you can't do this, slow down and open up extra space ahead of you to allow room for both you and the tailgater to stop. This will also encourage them to pass. If they don't pass, you will have given yourself and the tailgater more time and space to react in case an emergency does develop ahead.



PASSING & BEING PASSED

Passing and being passed by another vehicle is not much different than with a car. However, visibility is more critical. Be sure other drivers see you, and that you see potential hazards.

***PASSING**

- Ride in the left portion of the lane at a safe following distance to increase your line of sight and make you more visible. Signal and check for oncoming traffic. Use your mirrors and turn your head to look for traffic behind.
- When safe, move into the left lane and accelerate. Select a lane position that doesn't crowd the car you are passing and provides space to avoid hazards in your lane.
- Ride through the blind spot as quickly as possible.
- Signal again, and complete mirror and head checks before returning to your original lane and then cancel the signal.

***REMEMBER:** PASSES MUST BE COMPLETED WITHIN POSTED SPEED LIMITS, AND ONLY WHERE PERMITTED. KNOW YOUR SIGNS AND ROAD MARKINGS!

Never pass to the right of another vehicle on a two-lane road. A cycle may be smaller than other vehicles, but all rules and regulations still pertain to it as though it were an automobile.

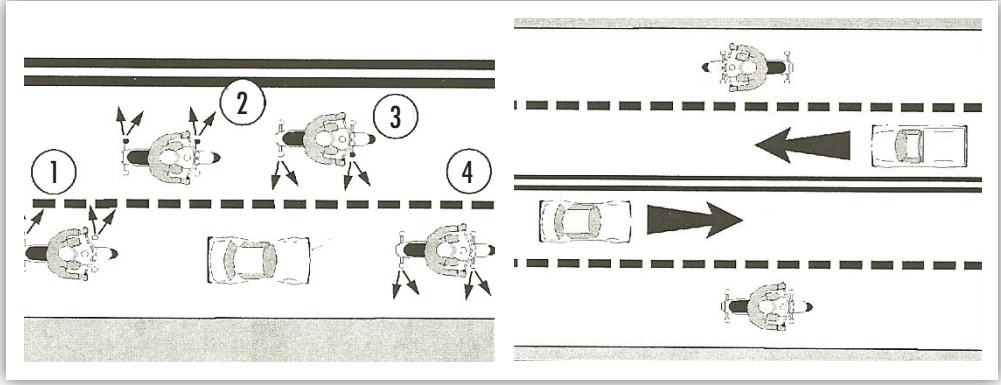
BEING PASSED

When you are being passed from behind or by an oncoming vehicle, stay in the left portion of your lane. Riding any closer to them could put you in a hazardous situation. Avoid being hit by:

- **THE OTHER VEHICLE** – A slight mistake by you or the passing driver could cause a sideswipe.
- **EXTENDED MIRRORS** – Some drivers forget that their mirrors hang out farther than their fenders.
- **OBJECTS THROWN FROM WINDOWS** – Even if the driver knows you're there, a passenger may not see you and might toss something on you or the road ahead of you.

- **BLASTS OF WIND FROM LARGER VEHICLES** – They can affect your control. You have more room for error if you are in the middle portion when hit by this blast than if you are on either side of the lane.

Do not move into the portion of the lane farthest from the passing vehicle. It might invite the other driver to cut back into your lane too early.



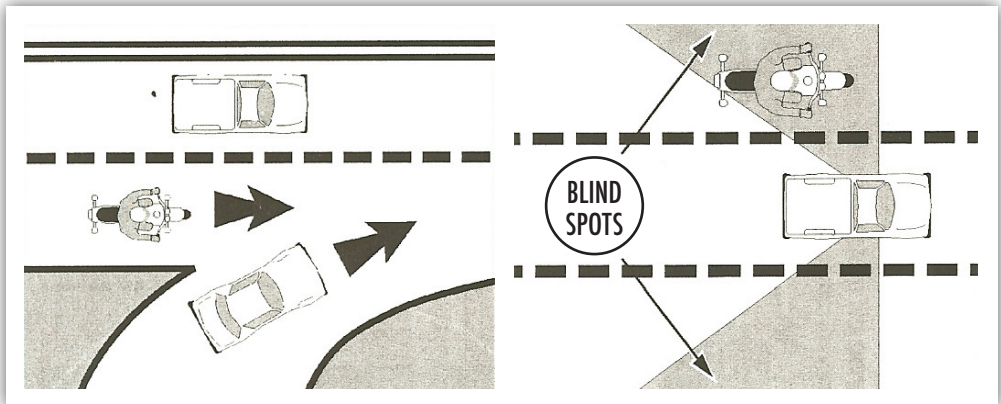
LANE SHARING

Cars and motorcycles need a full lane to operate safely. Lane sharing is usually prohibited. Riding between rows of stopped or moving cars in the same lane can leave you vulnerable to the unexpected. A hand could come out of a window; a door could open; a car could turn suddenly. Discourage lane sharing by others. Keep a left portion position whenever drivers might be tempted to squeeze by you. Drivers are most tempted to do this:

- In heavy, bumper-to-bumper traffic.
- When preparing to turn at an intersection.
- When they want to pass you.
- When moving into an exit lane or leaving a highway.

MERGING CARS

Drivers on an entrance ramp may not see you on the highway. Give them plenty of room. Change to another lane if one is open. If there is no room for a lane change, adjust speed to open up space for the merging driver.



CARS ALONGSIDE

Do not ride next to cars or trucks in other lanes if you do not have to. You might be in the blind spot of a car in the next lane, which could switch into your lane without warning. Cars in the next lane also block your escape if you come upon danger in your own lane. Speed up or drop back to find a place clear of traffic on both sides.

SEE (SEARCH, EVALUATE, EXECUTE)

Good experienced riders remain aware of what is going on around them. They improve their riding strategy by using SEE, a three-step process used to make appropriate judgments, and apply them correctly in different traffic situations. Let's examine each of these steps.

SEARCH

Search aggressively ahead, to the sides and behind to avoid potential hazards even before they arise. How assertively you search, and how much time and space you have, can eliminate or reduce harm. Focus even more on finding potential escape routes in or around intersections, shopping areas and school and construction zones. Search for factors such as:

- Oncoming traffic that may turn left in front of you.
- Hazardous road conditions.
- Traffic coming from the left and right.
- Traffic approaching from behind.

Be especially alert in areas with limited visibility. Visually "busy" surroundings could hide you and your motorcycle from others.

EVALUATE

Think about how hazards can interact to create risks for you. Anticipate potential problems and have a plan to reduce risks.

- **ROAD & SURFACE CHARACTERISTICS** – Potholes, guardrails, bridges, telephone poles and trees won't move into your path but may influence your riding strategy.
- **TRAFFIC CONTROL DEVICES** – Look for traffic signals, including regulatory signs, warning signs, and pavement markings, to help you evaluate circumstances ahead.
- **VEHICLES & OTHER TRAFFIC** – May move into your path and increase the likelihood of a crash. Think about your time and space requirements in order to maintain a margin of safety. You must leave yourself time to react if an emergency arises.

EXECUTE

Carry out your decision. To create more space and minimize harm from any hazard:

- Communicate your presence with lights and/or horn.
- Adjust your position and/or direction.
- Adjust your speed by accelerating, stopping or slowing.

Apply the old adage "one step at a time" to handle two or more hazards. Adjust speed to permit two hazards to separate. Then deal with them one at a time as single hazards. Decision-making becomes more complex with three or more hazards. Evaluate the consequences of each and give equal distance to the hazards.

In potential high-risk areas, such as intersections, shopping areas and school and construction zones, cover the clutch and both brakes to reduce the time you need to react.

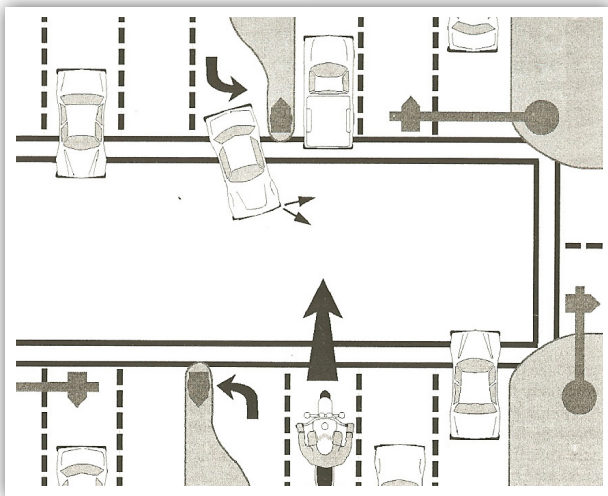
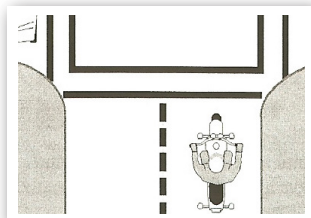
INTERSECTIONS

The greatest potential for conflict between you and other traffic is at intersections. An intersection can be in the middle of an urban area or at a driveway on a residential street – anywhere traffic may cross your path of travel. Over one-half of motorcycle/car crashes are caused by drivers entering a rider's right-of-way. Cars that turn left in front of you, including cars turning left from the lane to your right, and cars on side streets that pull into your lane, are the biggest dangers. Your use of **SEE** at intersections is critical.

There are no guarantees that others see you. Never count on "eye contact" as a sign that a driver will yield. Too often, a driver looks right at a motorcyclist and still fails to "see" him or her. The only eyes that you can count on are your own. If a car can enter your path, assume that it will. Good riders are always "looking for trouble" – not to get into it, but to stay out of it.

Increase your chances of being seen at intersections. Ride with your headlight on and in a lane position that provides the best view of oncoming traffic. Provide a space cushion around the motorcycle that permits you to take evasive action. As you approach the intersection, select a lane position that increases your visibility to the driver. Cover the clutch lever and both brakes to reduce reaction time. Reduce your speed as you approach an intersection.

After entering, move away from vehicles preparing to turn. Do not change speed or position radically. The driver might think that you are preparing to turn.

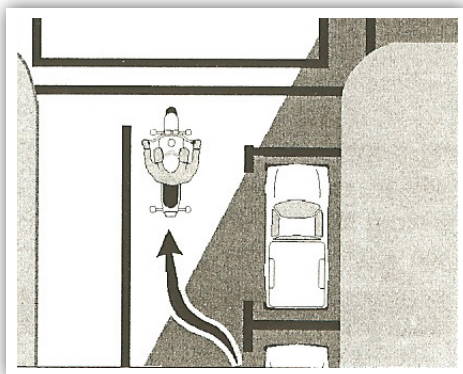


BLIND INTERSECTIONS

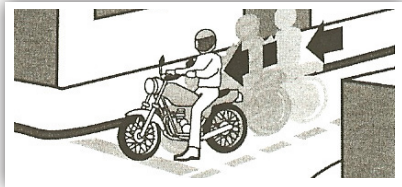
If you approach a blind intersection, move to the portion of the lane that will bring you into another driver's field of vision at the earliest possible moment.

In this picture, the rider has moved to the left portion of the lane – away from the parked car – so the driver on the cross street can see him as soon as possible.

Remember, the key is to see as much as possible and remain visible to others while protecting your space.



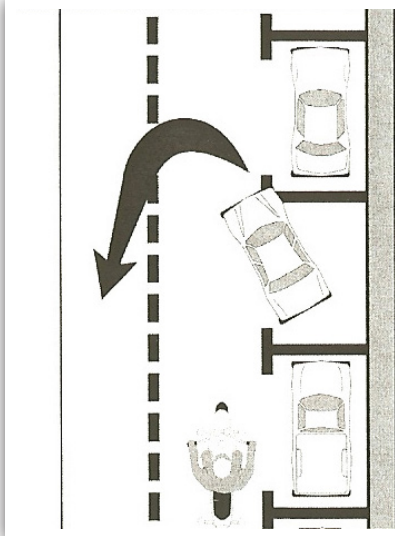
If you have a stop sign or stop line, stop there first. Then edge forward and stop again, just short of where the cross-traffic lane meets your lane. From that position, lean your body forward and look around buildings, parked cars or bushes to see if anything is coming. Just make sure your front wheel stays out of the cross lane of travel while you're looking.



PASSING PARKED CARS

When passing parked cars, stay toward the left of your lane. You can avoid problems caused by doors opening, drivers getting out of cars or people stepping from between cars. If oncoming traffic is present, it is usually best to remain in the center lane position to maximize your space cushion.

A bigger problem can occur if the driver pulls away from the curb without checking for traffic behind. Even if he does look, he may fail to see you. In either event, the driver might cut into your path. Slow down or change lanes to make room for someone cutting in. Cars making a sudden U-turn are the most dangerous. They may cut you off entirely, blocking the whole roadway and leaving you with no place to go. Since you can't tell what a driver will do, slow down and get the driver's attention. Sound your horn and continue with caution.

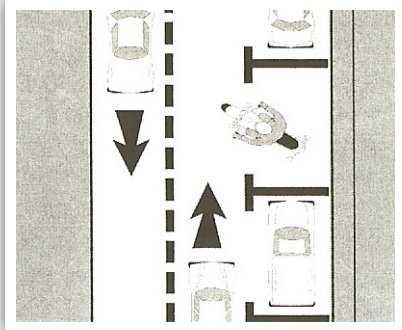


PARKING AT THE ROADSIDE

Park at a 60° to 90° angle to the curb with your rear wheel touching the curb.

INCREASING CONSPICUITY

In crashes with motorcyclists, drivers often say that they never saw the motorcycle. From ahead or behind, a motorcycle's outline is much smaller than a car's. Also, it's hard to see something you are not looking for, and most drivers are not looking for motorcycles.



More likely, they are looking through the skinny, two-wheeled silhouette in search of cars that may pose a problem to them. Even if a driver does see you coming, you aren't necessarily safe. Smaller vehicles appear farther away and seem to be traveling slower than they actually are. It is common for drivers to pull out in front of motorcyclists, thinking they have plenty of time. Too often, they are wrong. However, you can do many things to make it easier for others to recognize you and your motorcycle.

CLOTHING

Most crashes occur in broad daylight. Wear bright-colored clothing to increase your chances of being seen. Remember, your body is half of the visible surface area of the rider/motorcycle unit.

Bright orange, red, yellow or green jackets or vests are your best bets for being seen. Your helmet can do more than protect you in a crash. Brightly colored helmets can also help others see you.

Any bright color is better than drab or dark colors. Reflective, bright colored clothing (helmet and jacket or vest) is best. Reflective material on a vest and on the sides of the helmet will help drivers coming from the side to spot you. Reflective material can also be a big help for drivers coming toward you or from behind.

HEADLIGHT

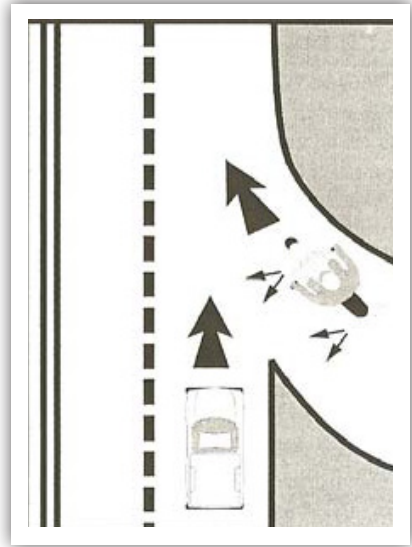
The best way to help others see your motorcycle is to keep the headlight on – at all times (new motorcycles sold in the USA since 1978 automatically have the headlights on when running). Studies show that, during the day, a motorcycle with its light on is twice as likely to be noticed. Use low beam at night and in fog.

SIGNALS

The signals on a motorcycle are similar to those on a car. They tell others what you plan to do. However, due to a rider's added vulnerability, signals are even more important. Use them anytime you plan to change lanes or turn. Use them even when you think no one else is around. It's the car you don't see that's going to give you the most trouble. Your signal lights also make you easier to spot. That's why it's a good idea to use your turn signals even when what you plan to do is obvious.

When you enter a freeway, drivers approaching from behind are more likely to see your signal blinking and make room for you.

Turning your signal light on before each turn reduces confusion and frustration for the traffic around you. Once you turn, make sure your signal is off or a driver may pull directly into your path, thinking you plan to turn again. Use your signals at every turn so drivers can react accordingly. Don't make them guess what you intend to do.



BRAKE LIGHT

Your motorcycle's brake light is usually not as noticeable as the brake lights on a car – particularly when your taillight is on. (It goes on with the headlight.) If the situation will permit, help others notice you by flashing your brake light before you slow down. It is especially important to flash your brake light before:

- You slow more quickly than others might expect (turning off a high speed highway).
- You slow where others may not expect it (in the middle of a block or at an alley).

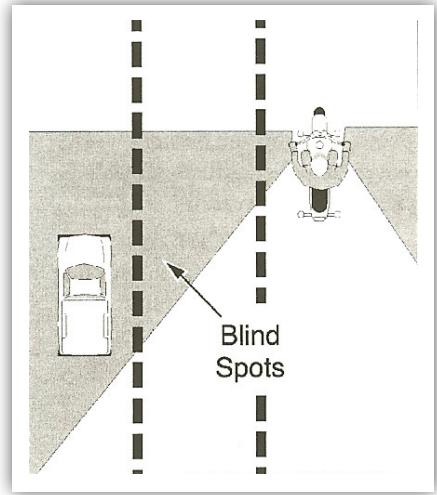
If you are being followed closely, it's a good idea to flash your brake light before you slow. The tailgater may be watching you and not see something ahead that will make you slow down. This will hopefully discourage them from tailgating and warn them of hazards ahead they may not see.

USING YOUR MIRRORS

While it's most important to keep track of what's happening ahead, you can't afford to ignore situations behind. Traffic conditions change quickly. Knowing what's going on behind is essential for you to make a safe decision about how to handle trouble ahead. Frequent mirror checks should be part of your normal searching routine. Make a special point of using your mirrors:

- When you are stopped at an intersection. Watch cars coming up from behind. If the drivers aren't paying attention, they could be on top of you before they see you.
- Before you change lanes. Make sure no one is about to pass you.
- Before you slow down. The driver behind may not expect you to slow, or may be unsure about where you will slow. For example, you signal a turn and the driver thinks you plan to turn at a distant intersection, rather than at a nearer driveway.

Some motorcycles have rounded (convex) mirrors. These provide a wider view of the road behind than do flat mirrors. They also make cars seem farther away than they really are. If you are not used to convex mirrors, get familiar with them. (While you are stopped, pick out a parked car in your mirror. Form a mental image of how far away it is. Then, turn around and look at it to see how close you came.) Practice with your mirrors until you become a good judge of distance. Even then, allow extradistance before you change lanes.



HEAD CHECKS

Checking your mirrors is not enough. Motorcycles have "blind spots" like cars. Before you change lanes, turn your head, and look to the side for other vehicles.

On a road with several lanes, check the far lane and the one next to you. A driver in the distant lane may head for the same space you plan to take. Frequent head checks should be your normal scanning routine, also. Only by knowing what is happening all around you are you fully prepared to deal with it.

HORN

Be ready to use your horn to get someone's attention quickly. It is a good idea to give a quick beep before passing anyone that may move into your lane. Here are some situations:

- A driver in the lane next to you is driving too closely to the vehicle ahead and may want to pass.
- A parked car has someone in the driver's seat.
- Someone is in the street, riding a bicycle or walking.

In an emergency, press the horn button loud and long. Be ready to stop or swerve away from the danger.

Keep in mind that a motorcycle's horn isn't as loud as a car's – therefore, use it, but don't rely on it. Other strategies, like having time and space to maneuver, may be appropriate along with the horn.

RIDING AT NIGHT

At night it is harder for you to see and be seen. Picking your headlight or taillight out of the car lights around you is not easy for other drivers. To compensate, you should:

- **REDUCE YOUR SPEED** – Ride even slower than you would during the day – particularly on roads you don't know well. This will increase your chances of avoiding a hazard.
- **INCREASE DISTANCE** – Distances are harder to judge at night than during the day. Your eyes rely upon shadows and light contrasts to determine how far away an object is and how fast it is coming. These contrasts are missing or distorted under artificial lights at night. Open up a four second following distance or more. And allow more distance to pass and be passed.
- **USE THE CAR AHEAD** – The headlights of the car ahead can give you a better view of the road than even your high beam can. Taillights bouncing up and down can alert you to bumps or rough pavement.
- **USE YOUR HIGH BEAM** – Get all the light you can. Use your high beam whenever you are not following or meeting a car. Be visible: Wear reflective materials when riding at night.
- **BE FLEXIBLE ABOUT LANE POSITION** – Change to whatever portion of the lane is best able to help you see, be seen and keep an adequate space cushion.

CRASH AVOIDANCE

No matter how careful you are, there will be times when you find yourself in a tight spot. Your chances of getting out safely depend on your ability to react quickly and properly. Often, a crash occurs because a rider is not prepared or skilled in crash avoidance maneuvers.

Know when and how to stop or swerve, two skills critical in avoiding a crash. It is not always desirable or possible to stop quickly to avoid an obstacle. Riders must also be able to swerve around an obstacle. Determining which skill is necessary for the situation is important as well. Studies show that most crash involved riders:

- Under brake the front tire and over brake the rear.
- Did not separate braking from swerving or did not choose swerving when it was appropriate.

The following information offers some good advice.

QUICK STOPS

To stop quickly, apply both brakes at the same time. Don't be shy about using the front brake, but don't "grab" it, either. Squeeze the brake lever firmly and progressively. If the front wheel locks, release the front brake immediately then reapply it firmly. At the same time, press down on the rear brake. If you accidentally lock the rear brake on a good traction surface, you can keep it locked until you have completely stopped; but, even with a locked rear wheel, you can control the motorcycle on a straightaway if it is upright and going in a straight line.

Always use both brakes at the same time to stop. The front brake can provide 70% or more of the potential stopping power. If you must stop quickly while turning or riding a curve, the best technique is to straighten the bike upright first and then brake.

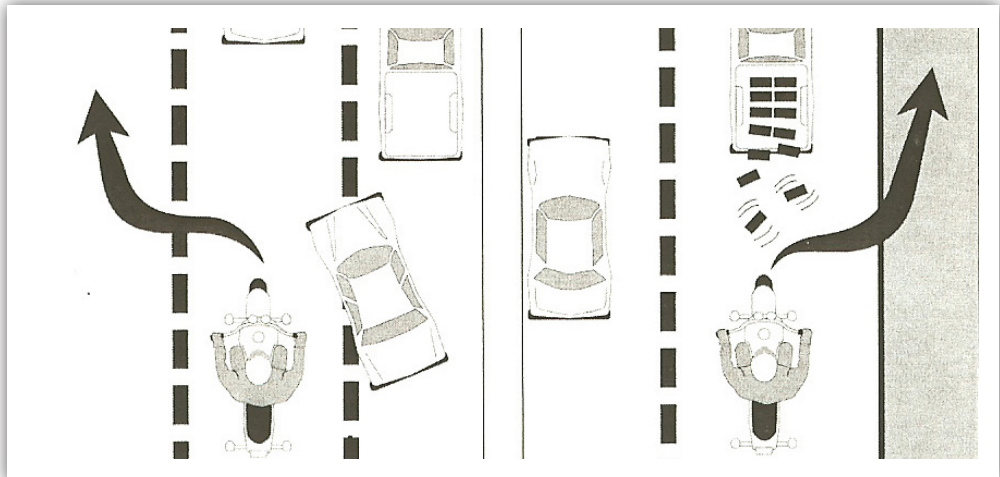
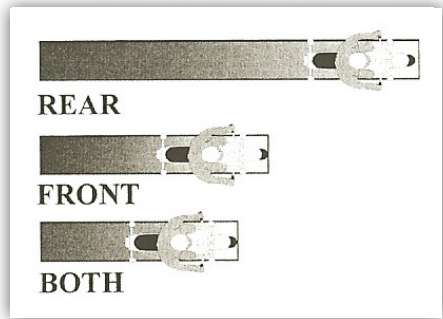
However, it may not always be possible to straighten the motorcycle and then stop. If you must brake while leaning, apply light brakes and reduce the throttle. As you slow, you can reduce your lean angle and apply more brake pressure until the motorcycle is straight and maximum brake pressure is possible. You should "straighten" the handlebars in the last few feet of stopping. The motorcycle should then be straight up and in balance.

SWERVING OR TURNING QUICKLY

Sometimes you may not have enough room to stop, even if you use both brakes properly. An object might appear suddenly in your path. Or the car ahead might squeal to a stop. The only way to avoid a crash may be to turn quickly, or swerve around it.

A swerve is any sudden change in direction. It can be two quick turns, or a rapid shift to the side. Apply a small amount of pressure to the hand grip located on the side of your intended direction of escape. This will cause the motorcycle to lean quickly. The sharper the turn(s), the more the motorcycle must lean.

Keep your body upright and allow the motorcycle to lean in the direction of the turn while keeping your knees against the tank and your feet solidly on the footrests. Let the motorcycle move underneath you.



Make your escape route the target of your vision. Press on the opposite hand grip once you clear the obstacle to return you to your original direction of travel. To swerve to the left, press the left handgrip, then press the right to recover. To swerve to the right, press right, then left.

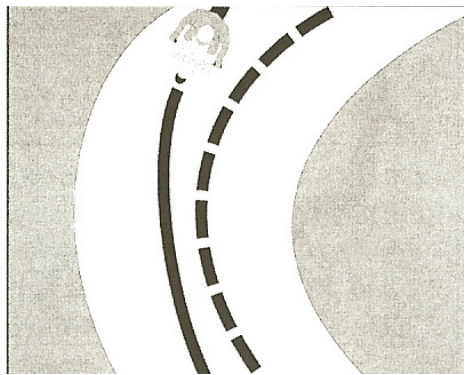
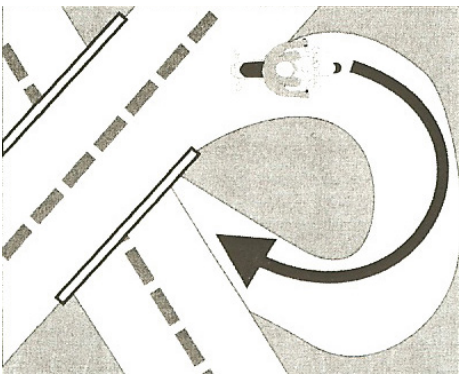
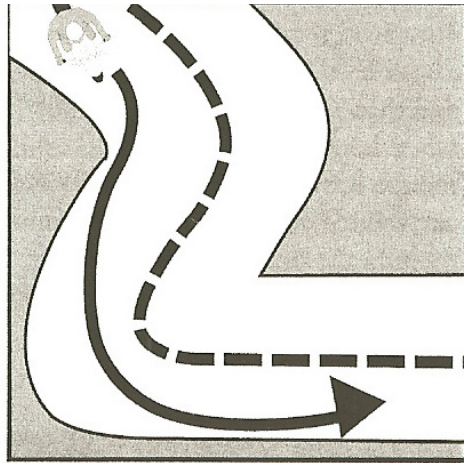
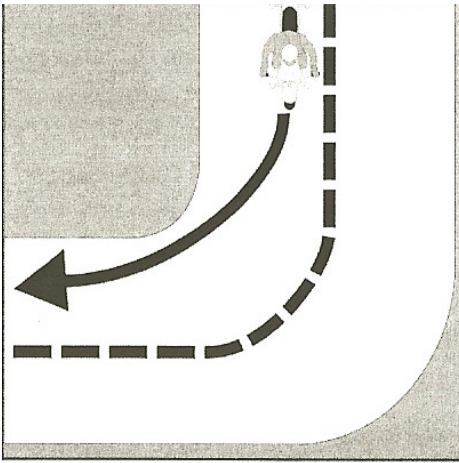
IF BRAKING IS REQUIRED, SEPARATE IT FROM SWERVING. Brake before or after – never while swerving.

CORNERING

A primary cause of single vehicle crashes is motorcyclists running wide in a curve or turn and colliding with the roadway or a fixed object. Every curve is different. Be alert to whether a curve remains constant, gradually widens, gets tighter or involves multiple turns. Ride within your skill level and posted speed limits.

Your best path may not always follow the curve of the road. Change lane position depending on traffic, road conditions and curve of the road. If no traffic is present, start at the outside of a curve to increase your line of sight and the effective radius of the turn. As you turn, move toward the inside of the curve, and as you pass the center, move to the outside to exit.

Another alternative is to move to the center of your lane before entering a curve – and stay there until you exit. This permits you to spot approaching traffic as soon as possible. You can also adjust for traffic “crowding” the center line, or debris blocking part of your lane.



HANDLING DANGEROUS SURFACES

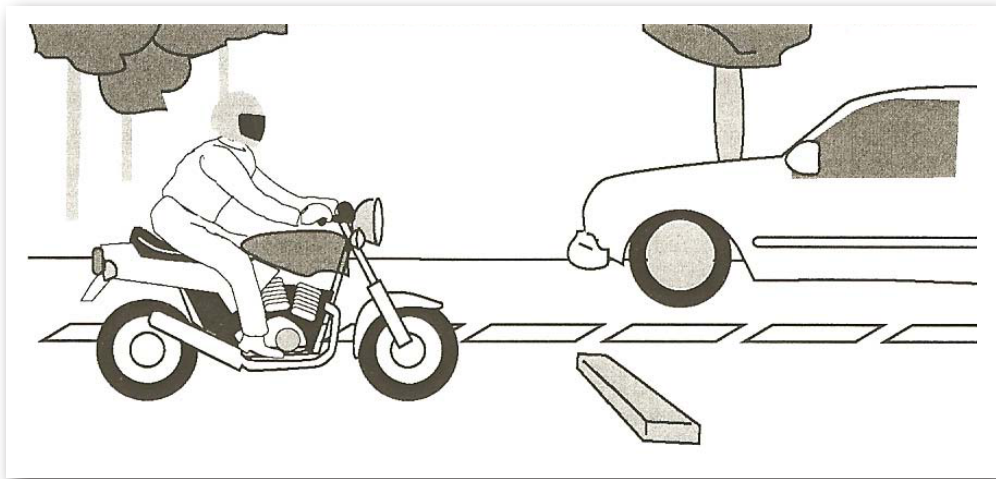
Your chance of falling or being involved in a crash increases whenever you ride across:

- UNEVEN SURFACES OR OBSTACLES.
- SLIPPERY SURFACES.
- RAILROAD TRACKS.
- GROOVES AND GRATINGS.

UNEVEN SURFACES & OBSTACLES

Watch for uneven surfaces such as bumps, broken pavement, potholes or small pieces of highway trash. Try to avoid obstacles by slowing or going around them. If you must go over the obstacle, first determine if it is possible. Approach it at as close to a 90° angle as possible. Look where you want to go to control your path of travel. If you have to ride over the obstacle, you should:

- Slow down as much as possible before contact.
- Make sure the motorcycle is straight.
- Rise slightly off the seat with your weight on the footrests to absorb the shock with your knees and elbows, and avoid being thrown off the motorcycle.
- Just before contact, roll on the throttle slightly to lighten the front end. If you ride over an object on the street, pull off the road and check your tires and rims for damage before riding any farther.



SLIPPERY SURFACES

Motorcycles handle better when ridden on surfaces that permit good traction. Surfaces that provide poor traction include:

- Mud, snow, and ice.
- Gravel roads, or where sand and gravel collect.
- Wet pavement, particularly just after it starts to rain and before surface oil washes to the side of the road.
- Lane markings (painted lines), steel plates and manhole covers, especially when wet.

To ride safely on slippery surfaces:

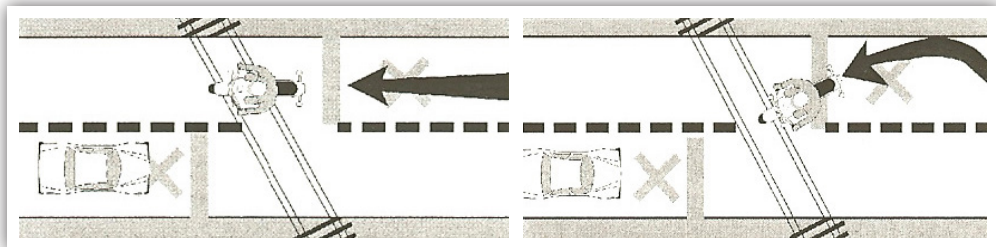
- **Reduce Speed** – Slow down before you get to a slippery surface to lessen your chances of skidding. Your motorcycle needs more distance to stop. And it is particularly important to reduce speed before entering wet curves.
- **Avoid Sudden Moves** –Any sudden change in speed or direction can cause a skid. Be as smooth as possible when you speed up, shift gears, turn or brake.
- **Use Both Brakes** – The front brake is still effective, even on a slippery surface. Squeeze the brake lever gradually to avoid locking the front wheel.

Remember, gentle pressure on the rear brake.

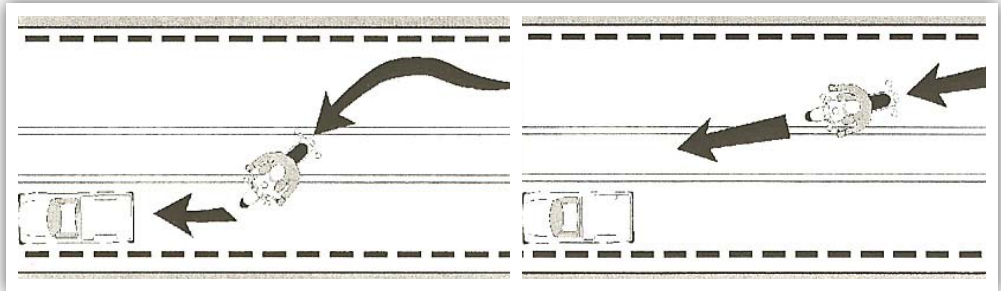
- The center of a lane can be hazardous when wet. When it starts to rain, ride in the tire tracks left by cars. Often, the left tire track will be the best position, depending on traffic and other road conditions as well.
- Watch for oil spots when you put your foot down to stop or park. You may slip and fall.
- Dirt and gravel collect along the sides of the road – especially on curves and ramps leading to and from highways. Be aware of what's on the edge of the road, particularly when making sharp turns and getting on or off freeways at high speeds.
- Rain dries and snow melts faster on some sections of a road than on others. Patches of ice tend to develop in low or shaded areas and on bridges and overpasses. Wet surfaces or wet leaves are just as slippery. Ride on the least slippery portion of the lane and reduce speed. Cautious riders steer clear of roads covered with ice or snow. If you can't avoid a slippery surface, keep your motorcycle straight up and proceed as slowly as possible. If you encounter a large surface so slippery that you must coast, or travel at a walking pace, consider letting your feet skim along the surface. If the motorcycle starts to fall, you can catch yourself. Be sure to keep off the brakes. If possible, squeeze the clutch and coast. Attempting this maneuver at anything other than the slowest of speeds could prove hazardous.

RAILROAD TRACKS, TROLLEY TRACKS & PAVEMENT SEAMS

Usually it is safer to ride straight within your lane to cross tracks. Turning to take tracks head-on (at a 90° angle) can be more dangerous – your path may carry you into another lane of traffic.

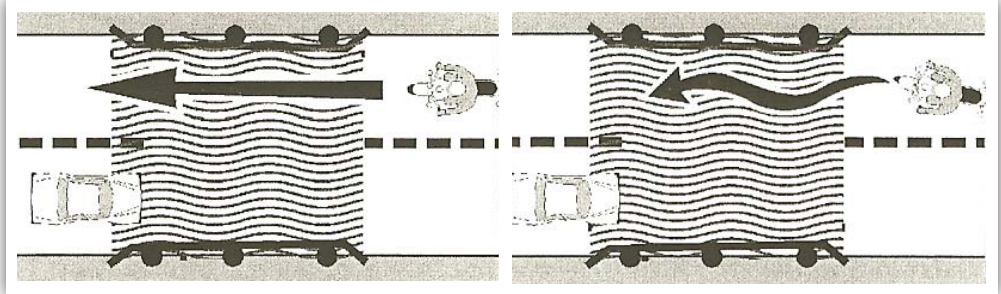


For track and road seams that run parallel to your course, move far enough away from tracks, ruts, or pavement seams to cross at an angle of at least 45°. Then, make a deliberate turn. Edging across could catch your tires and throw you off balance.



GROOVES & GRATINGS

Riding over rain grooves or bridge gratings may cause a motorcycle to weave. The uneasy, wandering feeling is generally not hazardous. Relax, maintain a steady speed and ride straight across. Crossing at an angle forces riders to zigzag to stay in the lane. The zigzag is far more hazardous than the wandering feeling.



MECHANICAL PROBLEMS

You can find yourself in an emergency the moment something goes wrong with your motorcycle. In dealing with any mechanical problem, take into account the road and traffic conditions you face. Here are some guidelines that can help you handle mechanical problems safely.

TIRE FAILURE

You will seldom hear a tire go flat. If the motorcycle starts handling differently, it may be a tire failure. This can be dangerous. You must be able to tell from the way the motorcycle reacts. If one of your tires suddenly loses air, react quickly to keep your balance. Pull off and check the tires.

If the front tire goes flat, the steering will feel "heavy." A front-wheel flat is particularly hazardous because it affects your steering. You have to steer well to keep your balance.

If the rear tire goes flat, the back of the motorcycle may jerk or sway from side to side.

If either tire goes flat while riding:

- Hold handgrips firmly, ease off the throttle, and keep a straight course.
- If braking is required, however, gradually apply the brake of the tire that isn't flat, if you are sure which one it is.
- When the motorcycle slows, edge to the side of the road, squeeze the clutch and stop.

STUCK THROTTLE

Twist the throttle back and forth several times. If the throttle cable is stuck, this may free it. If the throttle stays stuck, immediately operate the engine cut-off switch and pull in the clutch at the same time. This will remove power from the rear wheel, though engine sound may not immediately decline. Once the motorcycle is "under control," pull off and stop.

After you have stopped, check the throttle cable carefully to find the source of the trouble. Make certain the throttle works freely before you start to ride again.

WOBBLE

A "wobble" occurs when the front wheel and handlebars suddenly start to shake from side to side at any speed. Most wobbles can be traced to improper loading, unsuitable accessories or incorrect tire pressure. If you are carrying a heavy load, lighten it. If you can't, shift it. Center the weight lower and farther forward on the motorcycle. Make sure tire pressure, spring pre-load, air shocks and dampers are at the settings recommended for that much weight. Make sure windshields and fairings are mounted properly.

Check for poorly adjusted steering; worn steering parts; a front wheel that is bent, misaligned, or out of balance; loose wheel bearings or spokes; and worn swing arm bearings. If none of these is determined to be the cause, have the motorcycle checked out thoroughly by a qualified professional. Trying to "accelerate out of a wobble" will only make the motorcycle more unstable. Instead:

- Grip the handlebars firmly, but don't fight the wobble.
- Close the throttle gradually to slow down. Do not apply the brakes; braking could make the wobble worse.
- Move your weight as far forward and down as possible.
- Pull off the road as soon as you can to fix the problem.

DRIVE TRAIN PROBLEMS

The drive train for a motorcycle uses either a chain, belt, or drive shaft to transfer power from the engine to the rear wheel. Routine inspection, adjustment, and maintenance makes failure a rare occurrence. A chain or belt that slips or breaks while you're riding could lock the rear wheel and cause your motorcycle to skid.

If the chain or belt breaks, you'll notice an instant loss of power to the rear wheel. Close the throttle and brake to a stop in a safe area. On models with a drive shaft, loss of oil in the rear differential can cause the rear wheel to lock, and you may not be able to prevent a skid.

ENGINE SEIZURE

When the engine “locks” or “freezes” it is usually low on oil. The engine’s moving parts can’t move smoothly against each other, and the engine overheats. The first sign may be a loss of engine power or a change in the engine’s sound.

Squeeze the clutch lever to disengage the engine from the rear wheel. Pull off the road and stop. Check the oil. If needed, oil should be added as soon as possible or the engine will seize. When this happens, the effect is the same as a locked rear wheel. Let the engine cool before restarting.

ANIMALS

Naturally, you should do everything you safely can to avoid hitting an animal. If you are in traffic, however, remain in your lane. Hitting something small is less dangerous to you than hitting something big — like a car.

Motorcycles seem to attract dogs. If you are chased, downshift and approach the animal slowly. As you approach it, accelerate away and leave the animal behind. Don’t kick at an animal. Keep control of your motorcycle and look to where you want to go.

For larger animals (deer, elk, cattle) brake and prepare to stop—they are unpredictable.

FLYING OBJECTS

From time to time riders are struck by insects, cigarettes thrown from cars or pebbles kicked up by the tires of the vehicle ahead. If you are wearing face protection, it might get smeared or cracked, making it difficult to see.

Without face protection, an object could hit you in the eye, face or mouth. Whatever happens, keep your eyes on the road and your hands on the handlebars. When safe, pull off the road and repair the damage.

GETTING OFF THE ROAD

If you need to leave the road to check the motorcycle (or just to rest for a while), be sure you:

- **CHECK THE ROADSIDE** — Make sure the surface of the roadside is firm enough to ride on. If it is soft grass, loose sand or if you’re just not sure about it, slow way down before you turn onto it.
- **SIGNAL** — Drivers behind might not expect you to slow down. Give a clear signal that you will be slowing down and changing direction. Check your mirror and make a head check before you take any action.
- **PULL OFF THE ROAD** — Get as far off the road as you can. It can be very hard to spot a motorcycle by the side of the road. You don’t want someone else pulling off at the same place you are.
- **PARK CAREFULLY** — Loose and sloped shoulders can make setting the side or center stand difficult.

CARRYING PASSENGERS & CARGO

Only experienced riders should carry passengers or large loads. The extra weight changes the way the motorcycle handles, balances, speeds up and slows down. Before taking a passenger or a heavy load on the street, practice away from traffic.

EQUIPMENT

To carry passengers safely:

- Equip and adjust your motorcycle to carry passengers.
- Adjust your riding technique for the added weight.
- Instruct the passenger before you start.

Equipment should include:

- A PROPER SEAT — large enough to hold both of you without crowding. You should not sit any farther forward than you usually do.
- FOOTRESTS — for the passenger. Firm footing prevents your passenger from falling off and pulling you off, too.
- PROTECTIVE EQUIPMENT — the same protective gear recommended for operators.

Adjust the suspension to handle the additional weight. You will probably need to add a few pounds of pressure to the tires if you carry a passenger. (Check your owner's manual for appropriate settings.) While your passenger sits on the seat with you, adjust the mirrors and headlight according to the change in the motorcycle's angle.

INSTRUCTING PASSENGERS

Even if your passenger is a motorcycle rider, provide complete instructions before you start, including:

- Get on the motorcycle only after you have started the engine.
- Sit as far forward as possible without crowding you.
- Hold firmly to your waist, hips, belt, or to the bike's passenger hand holds.
- Keep both feet on the footrests, even when stopped.
- Keep legs away from the muffler(s), chains or moving parts.
- Stay directly behind you, leaning as you lean.
- Avoid unnecessary talk or motion.

Also, tell your passenger to tighten his or her hold when you:

- Approach surface problems.
- Are about to start from a stop.
- Warn that you will make a sudden move.

RIDING WITH PASSENGERS

Your motorcycle will respond more slowly with a passenger on board. The heavier your passenger, the longer it may take to slow down and speed up — especially on a light motorcycle.

- Ride a little slower, especially when taking curves, corners or bumps.
- Start slowing earlier as you approach a stop.

- Open up a larger cushion of space ahead and to the sides.
- Wait for larger gaps to cross, enter or merge in traffic.

Warn your passenger of special conditions – when you will pull out, stop quickly, turn sharply or ride over a bump. Turn your head slightly to make yourself understood, but keep your eyes on the road ahead.

CARRYING LOADS

Most motorcycles are not designed to carry much cargo. Small loads can be carried safely if positioned and fastened properly.

- **KEEP THE LOAD LOW** – Fasten loads securely, or put them in saddlebags. Piling loads against a sissy bar or frame on the back of the seat raises the motorcycle’s center of gravity and disturbs its balance.
- **KEEP THE LOAD FORWARD** – Place the load over, or in front of, the rear axle. Tank bags keep loads forward, but use caution when loading hard or sharp objects. Make sure the tank bag does not interfere with handlebars or controls. Mounting loads behind the rear axle can affect how the motor cycle turns and brakes. It can also cause a wobble.
- **DISTRIBUTE THE LOAD EVENLY** – Load saddlebags with about the same weight. An uneven load can cause the motorcycle to drift to one side.
- **SECURE THE LOAD** – Fasten the load securely with elastic cords (bungee cords or nets). Elastic cords with more than one attachment point per side are more secure. A tight load won’t catch in the wheel or chain, causing it to lock up and skid. Rope tends to stretch and knots come loose, permitting the load to shift or fall.
- **CHECK THE LOAD** – Stop and check the load every so often to make sure it has not worked loose or moved.

Passengers or bundles should never be carried in front of the handlebars.

GROUP RIDING

If you ride with others, do it in a way that promotes safety and doesn’t interfere with the flow of traffic.

KEEP THE GROUP SMALL

Small groups make it easier and safer for car drivers who need to get around them. A small number isn’t separated as easily by traffic or red lights. Riders won’t always be hurrying to catch up. If your group is larger than four or five riders, divide it up into two or more smaller groups.

KEEP THE GROUP TOGETHER

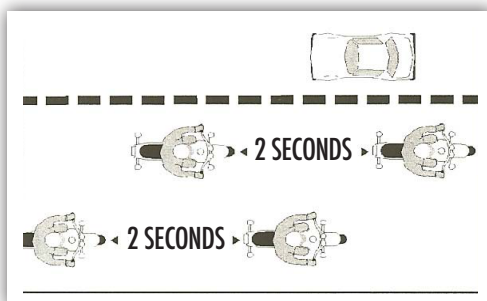
- **PLAN** – The leader should look ahead for changes and signal early so “the word gets back” in plenty of time. Start lane changes early to permit everyone to complete the change.
- **PUT BEGINNERS UP FRONT** – Place inexperienced riders just behind the leader. That way the more experienced riders can watch them from the back.
- **FOLLOW THOSE BEHIND** – Let the tailender set the pace. Use your mirrors to keep an eye on the person behind. If a rider falls behind, everyone should slow down a little to stay with the tailender.

- **KNOW THE ROUTE** — Make sure everyone knows the route. Then, if someone is separated they won't have to hurry to keep from getting lost or taking a wrong turn. Plan frequent stops on long rides.

KEEP YOUR DISTANCE

Maintain close ranks but at the same time keep a safe distance to allow each rider in the group time and space to react to hazards. A close group takes up less space on the highway, is easier to see and is less likely to be separated. However, it must be done properly.

- **DON'T PAIR UP** — Never operate directly alongside another rider. There is no place to go if you have to avoid a car or something on the road. To talk, wait until you are both stopped.
- **STAGGERED FORMATION** — This is the best way to keep ranks close yet maintain an adequate space cushion. The leader rides in the left side of the lane, while the second rider stays one second behind in the right side of the lane.

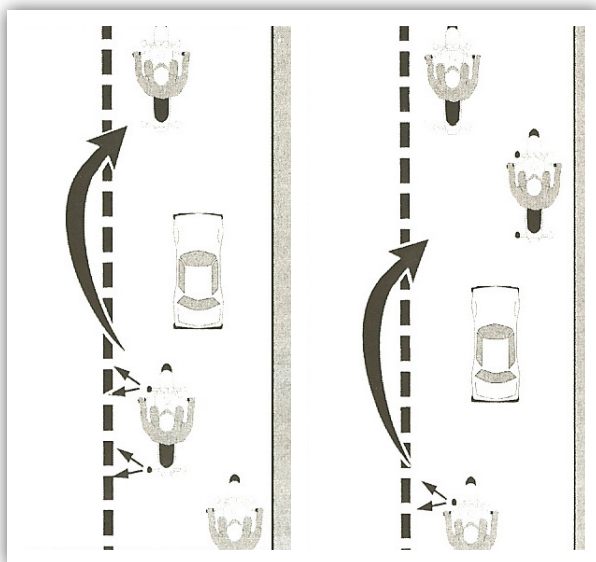


A third rider maintains in the left position, two seconds behind the first rider. The fourth rider would keep a two-second distance behind the second rider. This formation keeps the group close and permits each rider a safe distance from others ahead, behind and to the sides.

PASSING IN FORMATION

Riders in a staggered formation should pass one at a time.

- First, the lead rider should pull out and pass when it is safe. After passing, the leader should return to the left position and continue riding at passing speed to open room for the next rider.
- After the first rider passes safely, the second rider should move up to the left position and watch for a safe chance to pass. After passing, this rider should return to the right position and open up room for the next rider.



Some people suggest that the leader should move to the right side after passing a vehicle. This is not a good idea. It encourages the second rider to pass and cut back in before there is a large enough space cushion in front of the passed vehicle. It's simpler and safer to wait until there is enough room ahead of the passed vehicle to allow each rider to move into the same position held before the pass.

- Single-File Formation — It is best to move into a single-file formation when riding curves, turning, entering or leaving a highway.

BEING IN SHAPE TO RIDE

Riding a motorcycle is a demanding and complex task. Skilled riders pay attention to the riding environment and to operating the motorcycle, identifying potential hazards, making good judgments and executing decisions quickly and skillfully. Your ability to perform and respond to changing road and traffic conditions is influenced by how fit and alert you are. Alcohol and other drugs, more than any other factor, degrade your ability to think clearly and to ride safely. As little as one drink can have a significant effect on your performance.

Let's look at the risks involved in riding after drinking or using drugs. What to do to protect yourself and your fellow riders is also examined.

WHY THIS INFORMATION IS IMPORTANT

Alcohol is a major contributor to motorcycle crashes, particularly fatal crashes. Studies show that 40% to 45% of all riders killed in motorcycle crashes had been drinking. Only one third of those riders had a blood alcohol concentration above legal limits. The rest had only a few drinks in their systems — enough to impair riding skills. In the past, drug levels have been harder to distinguish or have not been separated from drinking violations for the traffic records. But riding “under the influence” of either alcohol or drugs poses physical and legal hazards for every rider.

Drinking and drug use is as big a problem among motorcyclists as it is among automobile drivers. Motorcyclists, however, are more likely to be killed or severely injured in a crash. Injuries occur in 90% of motorcycle crashes and 33% of automobile crashes that involve abuse of substances. On a yearly basis, 2,100 motorcyclists are killed and about 50,000 seriously injured in this same type of crash. These statistics are too overwhelming to ignore. By becoming knowledgeable about the effects of alcohol and other drugs you will see that riding and substance abuse don't mix. Take positive steps to protect yourself and prevent others from injuring themselves.

ALCOHOL & OTHER DRUGS IN MOTORCYCLE OPERATION

No one is immune to the effects of alcohol or drugs. Friends may brag about their ability to hold their liquor or perform better on drugs, but alcohol or drugs make them less able to think clearly and perform physical tasks skillfully. Judgment and the decision-making processes needed for vehicle operation are affected long before legal limitations are reached. Many over-the-counter, prescription and illegal drugs have side effects that increase the risk of riding. It is difficult to accurately measure the involvement of particular drugs in motorcycle crashes. But we do know what effects various drugs have on the process involved in riding a motorcycle. We also know that the combined effects of alcohol and other drugs are more dangerous than either is alone.

ALCOHOL IN THE BODY

Alcohol enters the bloodstream quickly. Unlike most foods and beverages it does not need to be digested. Within minutes after being consumed, it reaches the brain and begins to affect the drinker. The major effect alcohol has is to slow down and impair bodily functions — both mental and physical. Whatever you do, you do less well after consuming alcohol.

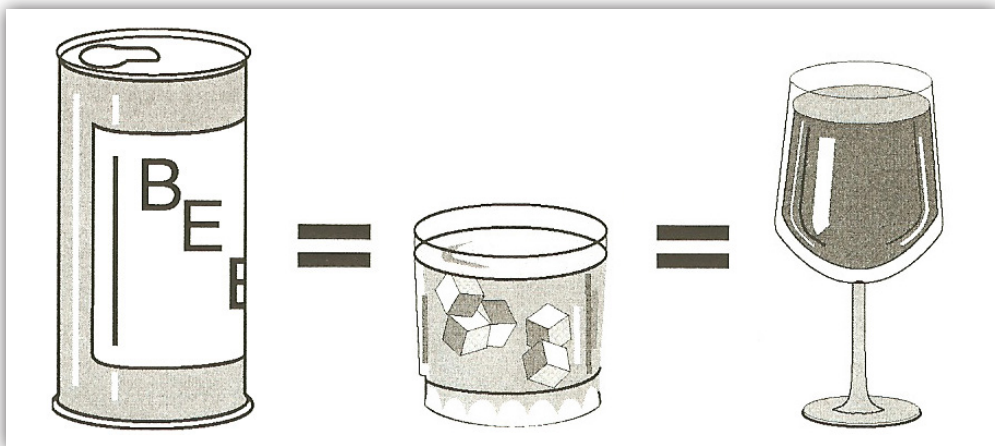
BLOOD ALCOHOL CONCENTRATION

Blood Alcohol Concentration or BAC is the amount of alcohol in relation to blood in the body. Generally, alcohol can be eliminated in the body at the rate of almost one drink per hour. But a variety of other factors may also influence the level of alcohol retained. The more alcohol in your blood, the greater the degree of impairment. Three factors play a major part in determining BAC:

- The amount of alcohol you consume.
- How fast you drink.
- Your body weight.

Other factors also contribute to the way alcohol affects your system. Your sex, physical condition and food intake are just a few that may cause your BAC level to be even higher. But the full effects of these are not completely known. Alcohol may still accumulate in your body even if you are drinking at a rate of one drink per hour. Abilities and judgment can be affected by that one drink.

A 12-ounce can of beer, a mixed drink with one shot of liquor, and a 5-ounce glass of wine all contain the same amount of alcohol. The faster you drink, the more alcohol accumulates in your body. If you drink two drinks in an hour, at the end of that hour, at least one drink will remain in your bloodstream.



Without taking into account any other factors, these examples illustrate why time is a critical factor when a rider decides to drink. A person drinking:

Seven drinks over the span of three hours would have at least four (**7-3=4**) drinks remaining in their system at the end of the three hours. They would need at least another four hours to eliminate the four remaining drinks before they consider riding.

Four drinks over the span of two hours would have at least two (**4-2=2**) drinks remaining in their system at the end of the two hours. They would need at least another two hours to eliminate the two remaining drinks before they consider riding.

There are times when a larger person may not accumulate as high a concentration of alcohol for each drink consumed. They have more blood and other bodily fluids. But because of individual differences it is better not to take the chance that abilities and judgment have not been affected. Whether or not you are legally intoxicated is not the real issue. Impairment of judgment and skills begins well below the legal limit.

ALCOHOL & THE LAW

In all states, an adult with a BAC of 0.08% or above is considered intoxicated. For operators under the age of 21, lower BAC limits (0.00 to 0.02%,) apply. It doesn't matter how sober you may look or act. The breath or urine test is what usually determines whether you are riding legally or illegally.

Your chances of being stopped for riding under the influence of alcohol are increasing. Law enforcement is being stepped up across the country in response to the senseless deaths and injuries caused by drinking drivers and riders.

CONSEQUENCES OF CONVICTION

Years ago, first offenders had a good chance of getting off with a small fine and participation in alcohol-abuse classes. Today the laws of most states impose stiff penalties on drinking operators. And those penalties are mandatory, meaning that judges must impose them.

If you are convicted of riding under the influence of alcohol or drugs, you may receive any of the following penalties:

- **LICENSE SUSPENSION** – Mandatory suspension for conviction, arrest or refusal to submit to a breath test.
- **FINES** – Severe fines are another aspect of a conviction, usually levied with a license suspension.
- **COMMUNITY SERVICE** – Performing tasks such as picking up litter along the highway, washing cars in the motor-vehicle pool or working at an emergency ward.
- **COSTS** – Additional lawyer's fees to pay, lost work time spent in court or alcohol-education programs, public transportation costs (while your license is suspended) and the added psychological costs of being tagged a "drunk driver."

MINIMIZE THE RISKS

Your ability to judge how well you are riding is affected first. Although you may be performing more and more poorly, you think you are doing better and better. The result is that you ride confidently, taking greater and greater risks. Minimize the risks of drinking and riding by taking steps before you drink. Control your drinking or control your riding.

MAKE AN INTELLIGENT CHOICE

- **DON'T DRINK** – Once you start, your resistance becomes weaker. Setting a limit or pacing yourself are poor alternatives at best. Your ability to exercise good judgment is one of the first things affected by alcohol. Even if you have tried to drink in moderation, you may not realize to what extent your skills have suffered from alcohol's fatiguing effects. Or Don't Ride— If you haven't controlled your drinking, you must control your riding.
- **LEAVE THE MOTORCYCLE** – so you won't be tempted to ride. Arrange another way to get home.
- **WAIT** – If you exceed your limit, wait until your system eliminates the alcohol and its fatiguing effects.

STEP IN TO PROTECT FRIENDS

People who have had too much to drink are unable to make a responsible decision. It is up to others to step in and keep them from taking too great a risk. No one wants to do this — it's uncomfortable, embarrassing and thankless. You are rarely thanked for your efforts at the time. But the alternatives are often worse. There are several ways to keep friends from hurting themselves:

- **ARRANGE A SAFE RIDE** — Provide alternative ways for them to get home.
- **SLOW THE PACE OF DRINKING** — Involve them in other activities.
- **KEEP THEM THERE** — Use any excuse to keep them from getting on their motorcycle. Serve them food and coffee to pass the time. Explain your concerns for their risks of getting arrested or hurt or hurting someone else. Take their key, if you can.
- **GET FRIENDS INVOLVED** — Use peer pressure from a group of friends to intervene.

It helps to enlist support from others when you decide to step in. The more people on your side, the easier it is to be firm and the harder it is for the rider to resist. While you may not be thanked at the time, you will never have to say, "If only I had ..."

FATIGUE

Riding a motorcycle is more tiring than driving a car. On a long trip, you'll tire sooner than you would in a car. Avoid riding when tired. Fatigue can affect your control of the motorcycle.

- **PROTECT YOURSELF FROM THE ELEMENTS** — Wind, cold, and rain make you tire quickly. Dress warmly. A windshield is worth its cost if you plan to ride long distances.
- **LIMIT YOUR DISTANCE** — Experienced riders seldom try to ride more than about six hours a day.
- **TAKE FREQUENT REST BREAKS** — Stop and get off the motorcycle at least every two hours.
- **DON'T DRINK OR USE DRUGS** — Artificial stimulants often result in extreme fatigue or depression when they start to wear off. Riders are unable to concentrate on the task at hand.

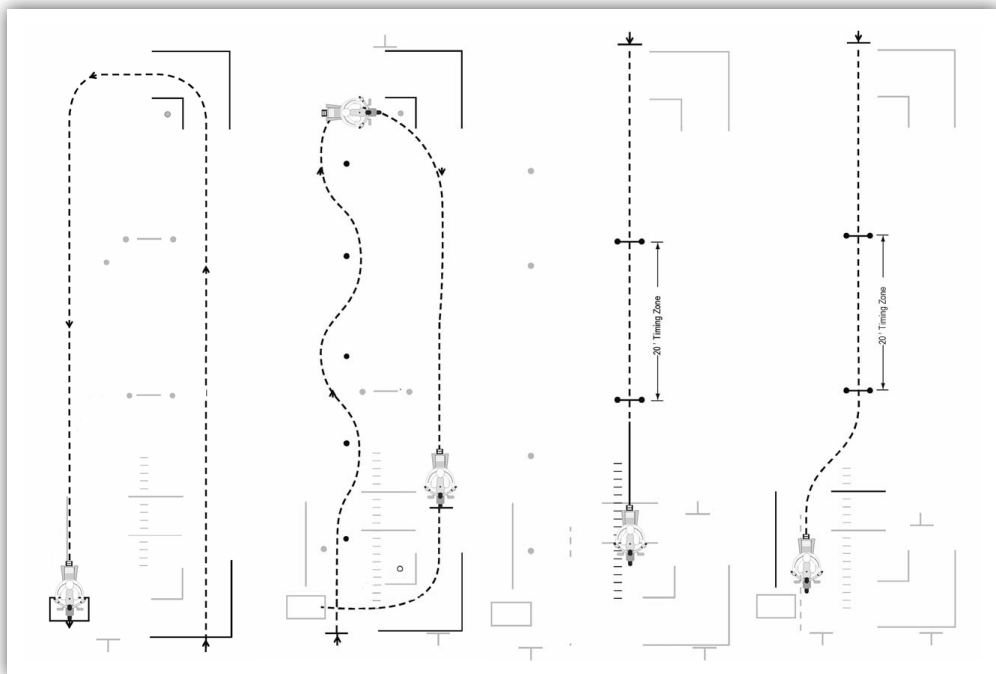
SAFETY TIPS/SUMMARY

- Always wear a U.S. Department of Transportation approved helmet and proper clothing.
- When traveling with several motorcyclists, ride in a staggered position, and never two abreast.
- Be careful with brakes — apply both brakes at the same time.
- Watch for slick or loose surfaces, and reduce speed before you approach these areas.
- Check nearby traffic before passing or changing lanes.
- Be alert at intersections. This is where most motorcycle accidents occur.
- Never make a U-turn without first coming to a full stop.
- Always wear clothing that can be seen readily by other drivers.

- Stay off the interstate highways unless your motorcycle is capable of cruising at interstate speed. The engine size should be a 250 cc or larger for interstate speeds.
- Do not carry passengers unless your motorcycle is designed for more than one person.
- Turn your lights on, even in daylight hours, so other drivers can see you.
- Remember that your stopping distance is increased if you are carrying a passenger or heavy bundle.
- Do not loan your motorcycle to anyone who is not experienced in riding your type of motorcycle.
- The best lane position for seeing and being seen is in the left third of the right lane.
- Guard against overconfidence.
- Remember that your stopping distance is greater than that of a passenger car.
- Avoid congested traffic areas and high speed when first learning to ride.
- Handlebars should be set no more than 15 inches above the seat level for maximum control and comfort.
- Children and animals may dart in the path of motorcycles. Be especially careful in school and residential areas.

PERFORMANCE TEST

During the motorcycle performance test, the applicant will be required to maneuver through the cones as illustrated in the following diagrams.



MOPEDS

“Moped” means either a motorized bicycle whose frame design may include one (1) or more horizontal crossbars supporting a fuel tank so long as it also has pedals, or a motorized bicycle with a step-through type frame which may or may not have pedals, rated no more than two (2) brake horsepower, a cylinder capacity not exceeding fifty (50) cubic centimeters, an automatic transmission not requiring clutching or shifting by the operator after the drive system is engaged, and capable of a maximum speed of not more than thirty (30) miles per hour.

First time applicants for a moped license must be at least 16 years old and complete a driver license application. You will only be required to pass the general knowledge and vision tests to be issued a moped license. A skills test and permit are not required. Persons already having a valid car/ motorcycle license or permit do not have to apply for a moped license.

OPERATION

Mopeds are a little more complicated to ride and operate than bicycles, but considerably simpler than motorcycles. Familiarity with controls can be learned by operating the vehicle in a parking lot or other off-street area. Since mopeds are not easily seen in the traffic flow, it is vital that the operator surround himself with as large a “space cushion” as possible. Riding with the headlight on and bike flags will help others see you.

Moped operators are not required to wear helmets or eye-protection devices, but they are strongly recommended. Mopeds CANNOT be operated on limited-access highways where the minimum speed is greater than thirty (30) miles per hour.

TRAIL BIKES & ALL-TERRAIN VEHICLES (ATV'S)

Trail bikes or all-terrain vehicles are designed for off-road use, and their use on streets or highways is illegal.

TRAFFIC SIGNALS

Standard Colors:

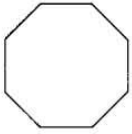
RED Stop or forbidden

GREEN Indicates movements permitted, directional guidance

YELLOW General Warning

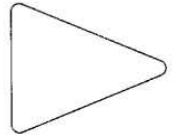
TRAFFIC SIGNS

Shapes are also helpful to identify particular signs. Among the standard shapes are:



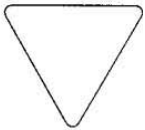
OCTAGON
(eight-sided) — used only for stop signs.

PENNANT
(tapers to a point) — advance warning of no-passing zones.



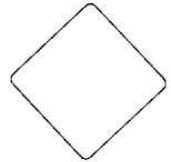
HORIZONTAL RECTANGLE
(rectangle parallel or across) — generally for guide signs.

VERTICAL RECTANGLE
(upright) — generally for regulating signs.



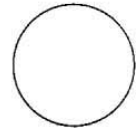
EQUILATERAL TRIANGLE
(triangle standing on its point) — used only for yield signs.

DIAMOND
(a square standing on a point — shape of a baseball field) — used only for warning of existing or possible hazards on roadway or adjacent area.



PENTAGON
(five-sided)— school advance and school warning signs.































ROUND
(circle) — railroad advance warning signs.



EXAMPLES:



REGULATORY SIGNS

				
STOP	YIELD	SPEED LIMIT 55	NO LEFT TURN	NO RIGHT TURN
				
NO BICYCLES	LEFT TURN ONLY	THRU & LEFT	LEFT LANE MUST TURN LEFT	DOUBLE LEFT TURNS
				
ONE WAY	ONE WAY	KEEP LEFT	KEEP RIGHT	WALK ON LEFT FACING TRAFFIC
				
NO TURNS	NO U TURN	KEEP OFF MEDIAN	DO NOT ENTER	WRONG WAY
				
DO NOT PASS	PASS WITH CARE	SLOWER TRAFFIC KEEP RIGHT	EMERGENCY PARKING ONLY	TRUCKS USE RIGHT LANE
				
NO PARKING ANY TIME	NO TURN ON RED	ONE HOUR PARKING 9AM-7PM	NO PARKING BUS STOP	2 HR PARKING 8:30 AM TO 5:30 PM

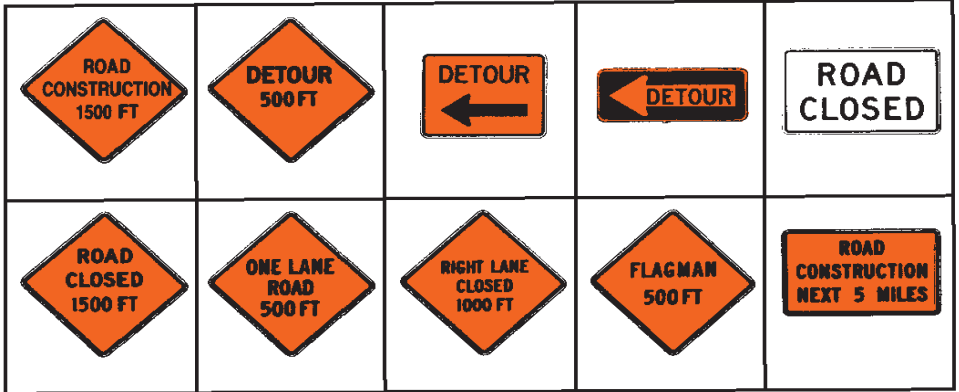
WARNING SIGNS

 SIGNAL AHEAD	 MERGING TRAFFIC	 LANE ENDS	 DIVIDED HIGHWAY	 DIVIDED HIGHWAY ENDS
 CATTLE CROSSING	 TRAFFIC PASS ON BOTH SIDES	 LOW CLEARANCE	 NO PASSING ZONE	 SCHOOL
 RIGHT TURN	 CURVE RIGHT	 REVERSE TURN	 REVERSE CURVE	 WINDING ROAD
 TWO WAY TRAFFIC	 HILL	 SLIPPERY WHEN WET	 BIKE CROSSING	 PEDESTRIAN CROSSING
 SCHOOL CROSSING	 RAILROAD CROSSING	 CROSS ROAD	 SIDE ROAD	 SIDE ROAD
 STOP AHEAD	 YIELD AHEAD	 PAVEMENT ENDS	 SOFT SHOULDER	 NARROW BRIDGE

STATE LAW
 MOVE OVER OR SLOW DOWN
 FOR STOPPED
 EMERGENCY VEHICLE

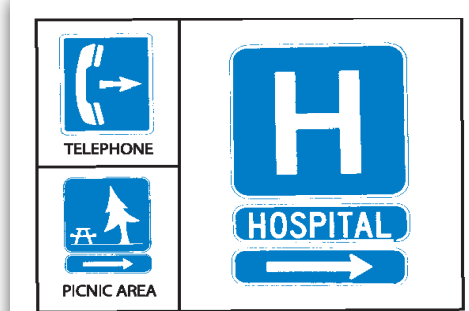
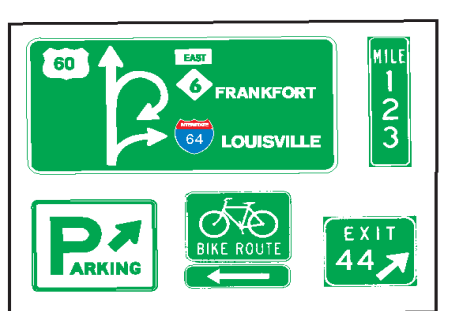
STATE  LAW
 MOVE DAMAGED
 VEHICLES TO SHOULDER
 IF NO INJURIES

CONSTRUCTION SIGNS



DIRECTIONAL SIGNS

SERVICE SIGNS



DIRECTIONAL SIGNS

